



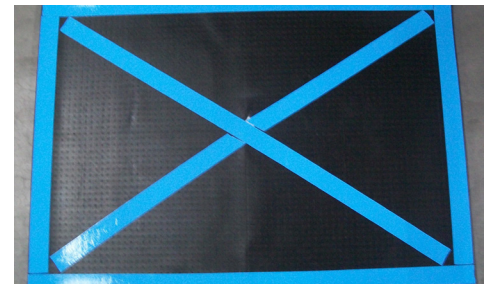
# Anchor Safe Lift Truck Mat

## Specialty Mats • Indoor/Outdoor

Anchor Safe Lift Truck Mats effectively remove moisture and dirt from forklift wheels to minimize tracking and potential slip hazards. They are ideal for use in areas where forklifts enter and exit buildings.



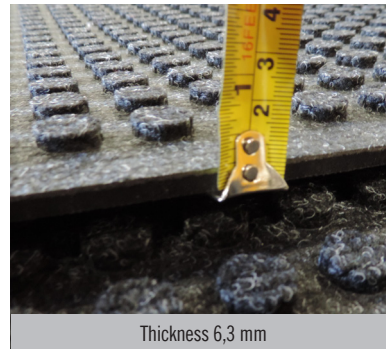
- Bi-level surface effectively removes moisture and dirt from lift truck wheels to improve lift truck safety.
- Modular mats are easy to install and scalable for the application.
- Aggressive adhesive taping system keeps tiles from moving.
- Polypropylene carpet is easy to clean and fast drying.
- Durable rubber backing and polypropylene carpet top withstands lift truck traffic up to 6000 kg.
- Recommended for all buildings where lift trucks must enter and exit a building to and from the outside.





# Anchor Safe Lift Truck Mat

Specialty Mats • Indoor/Outdoor



Thickness 6,3 mm



SBR rubber backing



Easy to install

## Specifications

Size:	115 x 170 cm
Backing:	SBR Rubber: contains 20% recycled tyre rubber.
Surface:	Solution Dyed Polypropylene carpet
Thickness:	6,3mm
Total weight:	5 kg/m <sup>2</sup>
Cleaning:	Vacuum/hot water
Fire retardancy:	Passes test EN13501-1 (2007)+ A1 (2009)