

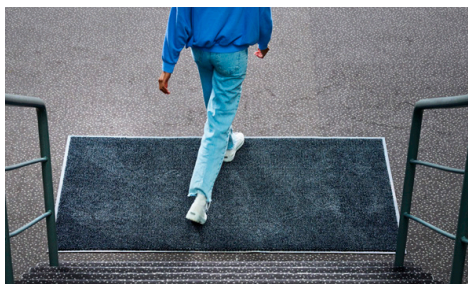
Micromix™

Entrance Mats • Indoor

Econyl fibers feature traditional nylon fibers blended with very thin Micromix™ fibers, working together to absorb more moisture than standard mats.



- Absorbs two and a half times more moisture than a standard carpeted mat.
- High twist heatset yarns are resistant against crushing and allow dirt to filter into the mat rather than remaining on the top of the carpet surface.
- 100% nitril rubber backing prevents curling and cracking in all types of weather.
- There is 34% postindustrial recycled content in the rubber polymer.



Micromix™

Entrance Mats • Indoor



Standard Sizes (cm)

60x85	115x240
75x85	115x250
85x115	115x300
85x150	150x200
85x300	150x240
115x180	150x250
115x200	150x300

Size Tolerance: +/- 2%



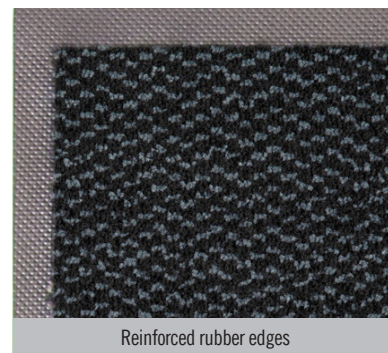
Made with 100% Regenerated Nylon

ECONYL®

#2520
Fossil
Grey

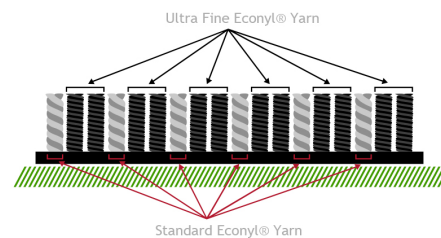


#2501
Graphite
Grey



Reinforced rubber edges

Micromix - Unique Blend of Econyl® Yarn



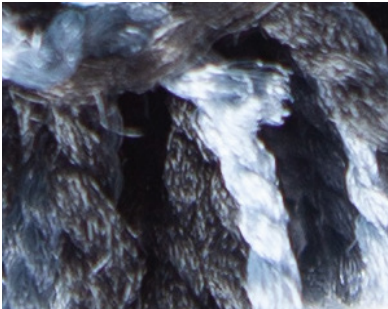
Specifications

Yarn:	100% Econyl® regenerated twisted and heatset BCF polyamide 6 fibres of different decitex
Carpet weight:	980 gr/m ²
Backing:	100% nitrilrubber backing with 34% post industrial recycled content in the polymer
Backing Thickness:	1.4 mm or 3 mm
Total weight:	2885 gr/m ²

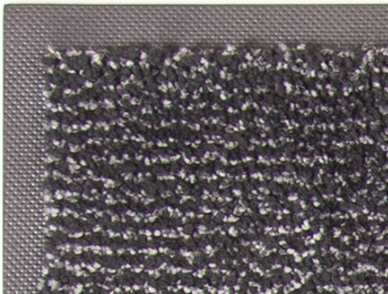
Micromix™

Formerly Microluxx™
Entrance Mats • Indoor

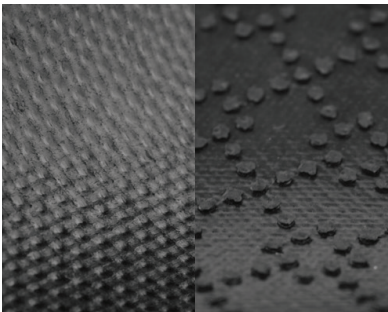
High Twist heat set micromix™ allow dirt to filter into the mat



Solution Dyed Nylon & Micromix™ fiber

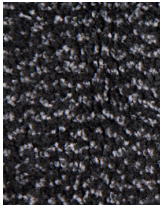


Reinforced rubber edges



Smooth or claw backing

#160
Stardust
Grey



#161
Storm
Granite



#162
Ocean
Blue



Standard Sizes (cm)

60x85	115x250
75x85	115x300
85x115	150x200
85x150	150x240
85x300	150x250
115x180	150x300
115x200	200x200
115x240	200x300

Width 200cm only available for orders 100 linear meters and above
Size Tolerance: +/- 2%

Specifications

- Yarn:** 50% Type 6 Solution Dyed Nylon & 50% recycled Micromix™ fiber
- Carpet weight:** 1112 gr/m²
- Backing:** 100% nitrilrubber backing with 34% post industrial recycled content in the polymer
- Total weight:** 3112 gr/m²
- Also available in 3 mm rubber backing