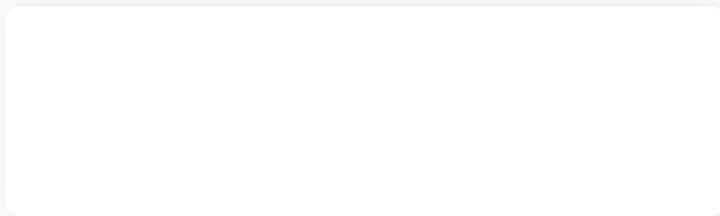
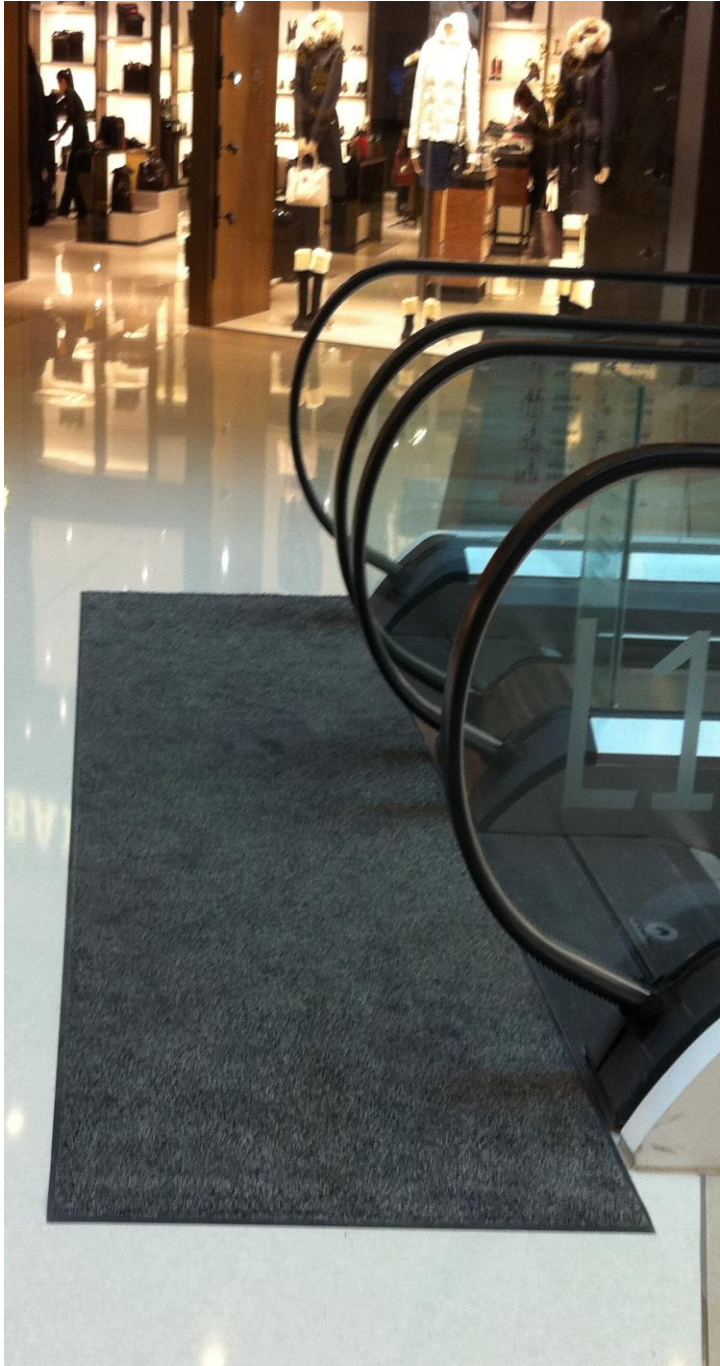


Cotton Plus™

→ ENTRANCE MAT • INDOOR



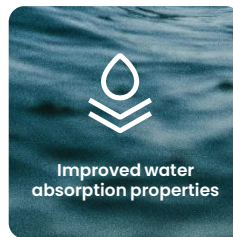
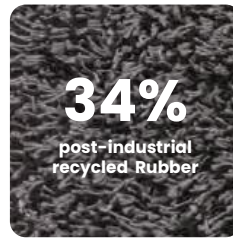
→ WHY CHOOSE THIS MAT?

Cotton Plus™ is the result of our commitment to continuous innovation and technological development.

- Improved **water absorption** properties
- Contains microfibrils that retain **dry dust**
- **Extended lifetime** by about 40% compared with conventional mats, due to the superior performance of the yarn construction
- Significantly improved **colour fastness**
- Manufactured with **long-lasting nitrile rubber**
- There is **34% post-industrial recycled content** in the rubber polymer

→ SPECIFICATIONS

Yarn	Intimate blend of 50% Cotton with 45% Polyester and 5% Polyester Microfibers <ul style="list-style-type: none">• Carpet weight: 880 g/m²
Backing	<ul style="list-style-type: none">• Rubber backing: 100% nitrile rubber with 34% post-industrial recycled content in the polymer - phthalate free - For maximum oil resistance, durability, and performance. Compression-molded with reinforced borders on all four sides.
Border	<ul style="list-style-type: none">• Thickness: 2,27 mm
Other properties	<ul style="list-style-type: none">• Total weight: 2630 g/m²• Pile height: 10,5 mm
Recommended use	Recommended for indoor commercial use at entryways, in lobbies, at front desks or anywhere additional traction or moisture control is needed.



→ STANDARD SIZES

85x120	85x150	85x300
115x180	115x200	115x240
115x300	150x250	150x300

Size Tolerance: +/- 2%

→ COLOURS



Black/
white

Grey

→ CLEANING INSTRUCTIONS



Cotton Plus™ mats can be cleaned in several different ways:

1. They can be commercially laundered (see Laundering Instructions)
2. Vacuumed regularly (daily in high-traffic areas; weekly in lower-traffic applications)
3. Cleaned with an extractor, or hosed off as necessary to remove heavy soil

Hang to dry. Mats should always be dry before they are placed back in service and cooled before rolling.

Laundering Instructions

1. Flush, 2-3 Min. on a medium water level with a maximum temperature of 49 °C
2. Flush (optional), 2-3 Min. on a medium water level with a maximum temperature of 27 °C
3. Break, 5-10 Min. on a high water level with a maximum temperature of 49 °C
4. Rinse, 2 Min. on a high water level with cold temperature
5. Rinse, 2 Min. on a high water level with cold temperature
6. Extract on low speed, 1-2 Min.
7. Shakeout with the drum turning, 1 Min.
8. Extract, on a maximum of 250G, 3-5 Min.
9. Dry (optional), 15-30 Min. with a maximum basket temperature of 82 °C
10. Cooldown, 5 Min.

Additional recommendations

- For Heavy Soiled Mats, increase the temperature up to max. 60 °C. Frequent washing at this temperature can lead to color-loss.
- The break should not exceed pH of 9,5; use low pH non-ionic detergents.
- To prevent pilling on other mats, Cotton mats should not be washed with mats made of Nylon or other synthetic carpet yarns.
- Do not over-dry mats; Basket-temperature of the dryer should not exceed 82 °C.
- Insure that cotton mats are thoroughly dried to prevent mildew from forming in the cotton yarn.
- Lay mats flat following removal from washer; allow mats to cool before rolling.

