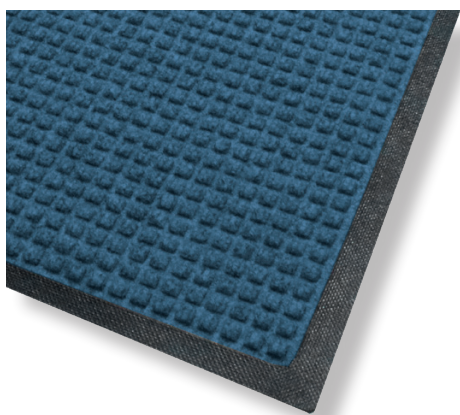




WaterHog

Entrance Mats • Indoor/Outdoor

WaterHog mats are durable, stain-resistant mats with a unique bi-level design that traps dirt and moisture, keeping your floors clean, dry, and safe.



- **Clean & Dry** - Raised nubs remove dirt and moisture from shoes and trap it below foot level.
- **Recycled material** - Solution-Dyed PET carpet made from 100% recycled plastic bottles. Nitril Rubber backing is PVC-Free.
- **Waterdam Borders** - The borders are designed to hold water and dirt on the mat keeping it off carpets and floors.
- **Durable** - Reinforced rubber nubs prevent pile from crushing and extend the performance life of the mat.
- **Fade & Stain Resistant** - Solution-dyed PET fabric is resistant to staining, dries quickly, and will not fade or rot.
- **Easy to Clean and Maintain** - Simply use commercial cleaning machines, vacuum, high pressure cleaner or steam clean.



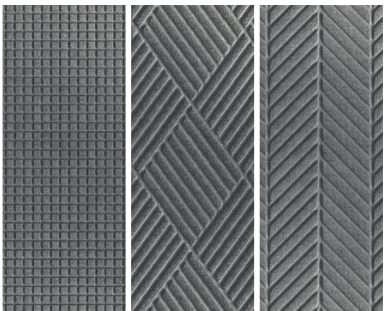
WaterHog



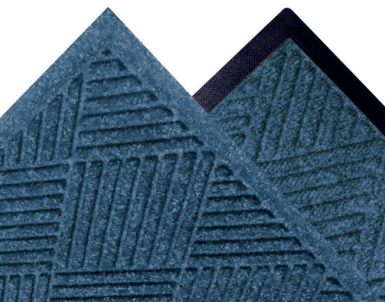
Standard Sizes (cm)

60x90	115x180
90x150	180x250

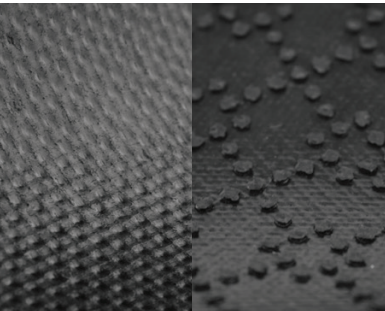
Size Tolerance: +/- 2%



3 patterns: Classic, Diamond, Herringbone



Fashion or rubber border

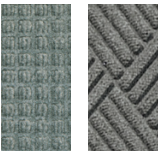


Smooth or claw backing

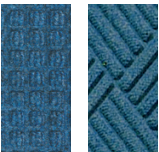
#54
Charcoal



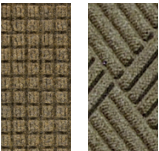
#57
Medium
Grey



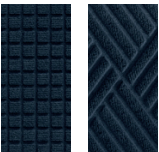
#56
Medium
Blue



#50
Camel



#61
Navy



Specifications

Carpet:	100% Recycled Solution Dyed P.E.T.
Weight:	820 gr/m ²
Backing:	Rubber backing
Thickness:	3.63 mm - Border 1.98 mm - Body
Total Weight:	2.8 kg/m ²
Border Options:	Fashion and rubber border