

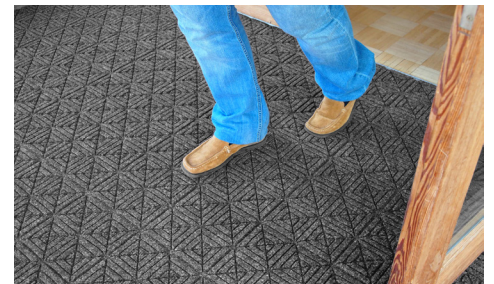
Waterhog Max Tile

Entrance Mats • Indoor/Outdoor

WaterHog Eco Premier Tiles are designed to provide scalable flooring solutions for large areas.



- 100% recycled fabric surface will not fade in the sun or rot in wet conditions.
- 100% resistant to bleach and sunlight.
- Heavy-duty rubber backing is made from 20% recycled rubber content and stays in place.
- Fast absorbing, quick drying polypropylene.
- Standard sizes



Waterhog Max Tile

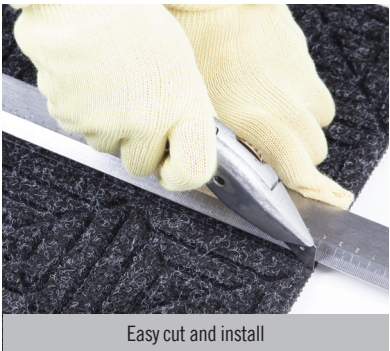
Entrance Mats • Indoor/Outdoor



Standard Sizes (cm)

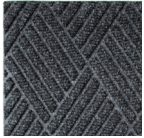
45,72 x 45,72

Sold in cases of 12
Size Tolerance: +/- 2%
*black smoke is in stock in these sizes

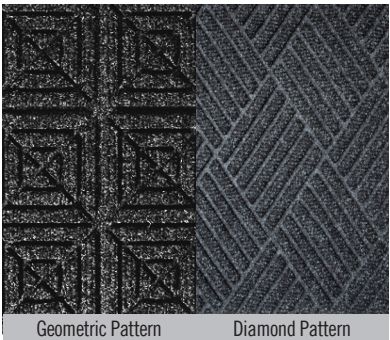


Easy cut and install

black
smoke

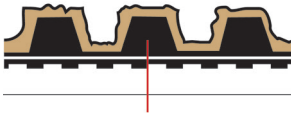


camel



Geometric Pattern

Diamond Pattern



Rubber reinforced textile

Specifications

Type: 100% post-consumer PET Polyester Fiber

Weight: 850 gr/m²

Rubber Nubs Height: 6,1 mm

Type: 100% SBR Rubber (20% recycled content)

Total Thickness: 9.3 mm